

# Find out 3 things the EU project ENLIGHT-TEN has in common with football

## 1 Enlightenment

### The logo

The logo of ENLIGHT-TEN was created by a designer who developed the logo for the EURO 2014.



## 2



Visualisation of relocation of ENLIGHT-TEN PhD students

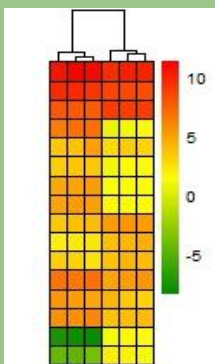
### Transfer activities

All PhD students of ENLIGHT-TEN moved to new country.



Number of transfers (player signing 2012/2013) according to data for from Prime Time Sport

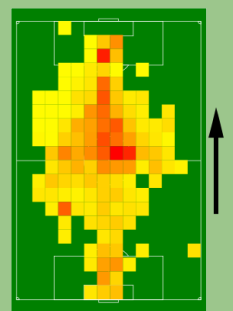
## 3



Heat map of differential expression

### Large Datasets

For heat maps in football large data sets on the frequency of events in a given area are created and analysed. The ENLIGHT-TEN projects combines the power of large data sets, so called “Big Data Analysis” and the understanding of an important part of the human immune system, the T cells. Understanding and manipulating T cells offers the opportunity to treat a wide-range of immune mediated pathologies such as type 1 diabetes, multiple sclerosis and allergies.



Heat map of ball possession  
Picture by Karsten Adam (GNU FDL)

Find out more at [www.enlight-ten.eu](http://www.enlight-ten.eu)